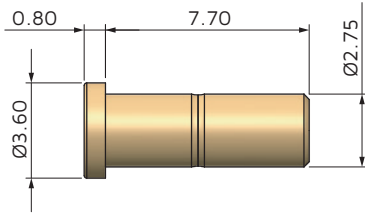
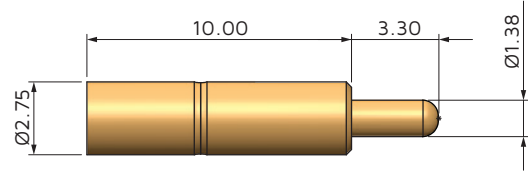


1.20 mm (0.047 in.) contacts

Female contacts (sockets)



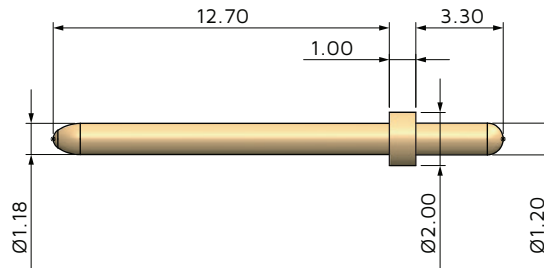
HYPS120E025I001



HYPS120S025I001

Ordering Number	Internal Part Number	Termination Style	Contact Resistance (mΩ)	Current Rating (A)	Extraction Force (N)	Contact Life (cycles)	Materials	Plating (µm)
HYPS120E025I001	23401-Z65	Closed end	<2.5	9.0	0.6	Up to 100k	BeCu/Brass	>0.25 gold
HYPS120S025I001	23349-Z52	Straight	<2.5	9.0	0.6	Up to 100k	BeCu/Brass	>0.25 gold

Male contacts (pins)



HYPP120S127I001

Ordering Number	Internal Part Number	Termination Style	Materials	Plating (µm)
HYPP120S127I001	23876-T15	Straight	Brass	>1.27 gold