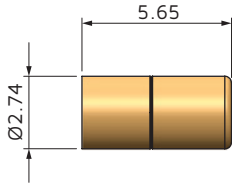
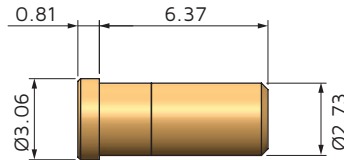


# 1.02 mm (0.040 in.) contacts

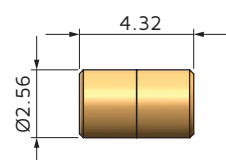
## Female contacts (sockets)



HYPS102E127A001



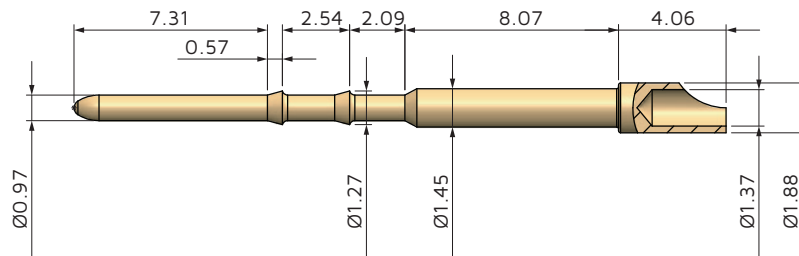
HYPS102E127A002



HYPS102O127A001

Ordering Number	Internal Part Number	Termination Style	Contact Resistance (mΩ)	Current Rating (A)	Extraction Force (N)	Contact Life (cycles)	Materials	Plating (μm)
HYPS102E127A001	YSK0102-060AH	Closed end	<2.5	7.5	1.0	Up to 100k	BeCu/Brass	>1.27 gold
HYPS102E127A002	YSK0102-004AH	Closed end	<2.5	7.5	1.0	Up to 100k	BeCu/Brass	>1.27 gold
HYPS102O127A001	YSK0102-120AH	Open both ends	<2.5	7.5	1.0	Up to 100k	BeCu/Brass	>1.27 gold

## Male contacts (pins)



HYPP102U127A001

Ordering Number	Internal Part Number	Termination Style	Materials	Plating (μm)
HYPP102U127A001	YPN0102-052H	Solder cup	Brass	>1.27 gold