

TITLE: SPECIFICATION CONTROL DRAWING

PART IDENTIFIER: 5661

DESCRIPTION: HIGH POWER LOAD, BERYLLIA

ASSEMBLY DWG: 1700354

1.0 SPECIFICATIONS:

1.1 ELECTRICAL:

- 1.1.1 RESISTANCE VALUE: 50Ω NOMINAL.
- 1.1.2 INPUT POWER (@ 100°C HEAT SINK, DERATED LINEARLY FROM RATED POWER TO 0 WATTS @ 150°C):
 - 1.1.3.1 AVERAGE: 125 WATTS.
 - 1.1.3.2 PEAK: 1250 WATTS (BASED ON 100US PULSE WIDTH 1% DUTY CYCLE).
- 1.1.3 FREQUENCY RANGE: DC - 1.0 GHZ.
- 1.1.4 VSWR: 1.30 MAX.

1.2 MECHANICAL:

- 1.2.1 OUTLINE DWG: SEE SHEET 2.
- 1.2.2 WORKMANSHIP: PER MIL-STD-454, REQUIREMENT 9, AND MIL-R-55342.

1.3 ENVIRONMENTAL:

- 1.3.1 TEMPERATURE RANGE:
 - 1.3.1.1 STORAGE: -65°C TO +150°C.
 - 1.3.1.2 OPERATING: -55°C TO +150°C.

2.0 UNIT MARKING: "5661" AND LOGO.
LEGIBILITY AND PERMANENCY PER MIL-STD-130.

3.0 QUALITY ASSURANCE:

3.1 SAMPLE INSPECT PER ANSI/ASQC Z1.4 GENERAL INSPECTION, LEVEL II, AQL = 1.0.

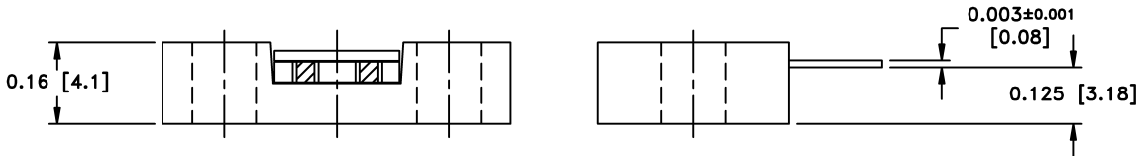
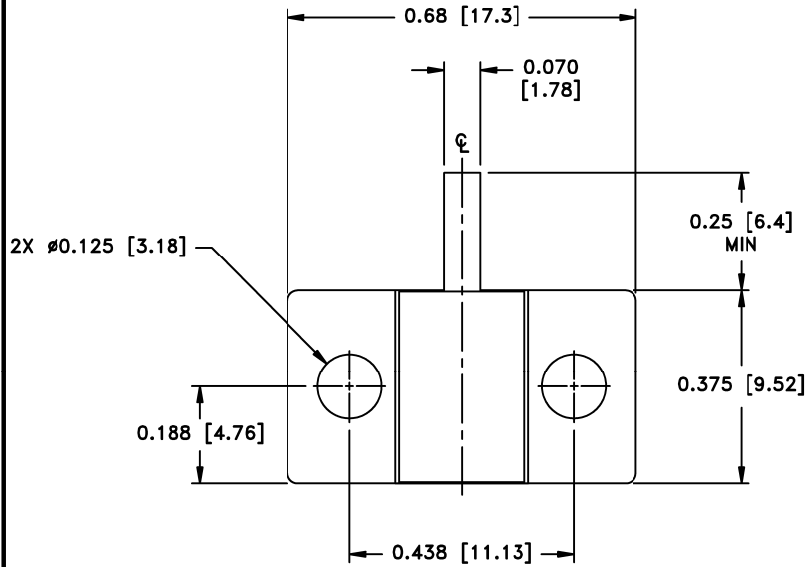
- 3.1.1 VISUAL AND MECHANICAL EXAMINATION FOR CONFORMANCE TO MIL-R-55342 AND CONTROL DRAWING REQUIREMENTS.
- 3.1.2 5 CYCLE BURN-IN (1-1/2 HOUR ON. 1/2 HOUR OFF) @ 125W @ 100°C.
- 3.1.3 MEASURE AND RECORD VSWR AT 1 GHZ.
 - 3.1.3.1 ACCEPTANCE LIMITS: 1.30:1 MAX.

3.2 DATA REQUIREMENTS:

- 3.2.1 NO TEST DATA REQUIRED FOR CUSTOMER.
- 3.2.2 DATA RETENTION - STANDARD.

4.0 PACKAGING: STANDARD PACKING PER 755W002.

EMC TECHNOLOGY 8851 SW OLD KANSAS AVE. STUART, FL 34997	CAGE CODE # 24602		DWG #	1008295000
	CHANGE NOTICE	EN 10-0812	REV LVL	B
			SHEET	1 OF 2



MECHANICAL SPECIFICATIONS:

- CHIP:
MATERIAL - BERYLLIA, ASTM F356.
- TOP PLATE:
MATERIAL - ALUMINA, MIL-I-10.
- TAB:
MATERIAL - BERYLLIUM COPPER, ASTM B194.
FINISH - GOLD, MIL-G-45204, TYPE II, CLASS 1.
- HEATSINK:
MATERIAL - COPPER, ASTM B187.
FINISH - NICKEL, QQ-N-290.

METRIC EQUIVALENTS GIVEN IN [mm]
FOR REFERENCE INFORMATION ONLY

ALLOW ±0.010 ON TOP PLATE FOR MISALIGNMENT.



8851 SW OLD KANSAS AVE
STUART, FL 34997
PHONE NO. (772)286-9300
FAX NO. (772)283-5286

UNLESS OTHERWISE SPECIFIED DIMENSIONS ARE IN INCHES

TOLERANCES

FRACT	---	---
ANG	---	---
XX	±0.01	
XXX	±0.005	
XXXX	---	---

THESE DRAWINGS AND SPECIFICATIONS ARE THE PROPERTY OF EMC TECHNOLOGY INC AND SHALL NOT BE DUPLICATED OR USED AS BASIS FOR THE MANUFACTURE OR SALE OF PARTS OR DEVICES WITHOUT PERMISSION.

CAGE CODE	SCALE	DRAWN BY	CHECKED BY	APPROVED BY
24602	4:1	CSS 6-29-98		DAR 6-29-98
REV	CHANGE NOTICE	DRAWING NO	SHEET	
B	10-0812	1008295000	2 OF 2	