

TITLE: SPECIFICATION CONTROL DRAWING

PART IDENTIFIER 4915

DESCRIPTION 50 OHM FLUSH MOUNT TERMINATION

ASSEMBLY DWG 1500284

1.0 SPECIFICATIONS:

1.1 ELECTRICAL:

- 1.1.1 IMPEDANCE: 50 OHMS NOMINAL.
- 1.1.2 FREQUENCY RANGE: DC-18GHZ.
- 1.1.3 INPUT POWER (MAX @ 60°C):
 - 1.1.3.1 AVERAGE: 5 WATT.
 - 1.1.3.2 PEAK: 50 WATTS (100US PULSE WIDTH AND 0.1% DUTY CYCLE).
- 1.1.4 VSWR: DC TO 4.0 GHZ - 1.10 MAX.
4.0 TO 8.0 GHZ - 1.15 MAX.
8.0 TO 12.0 GHZ - 1.20 MAX.
12.0 TO 18.0 GHZ - 1.30 MAX.

1.2 MECHANICAL:

- 1.2.1 OUTLINE DWG: SEE SHEET 2.

1.3 ENVIRONMENTAL:

- 1.3.1 TEMPERATURE RANGE:
 - 1.3.1.1 NON-OPERATING: -55°C TO +150°C.
 - 1.3.1.2 OPERATING: -55°C TO +125°C.

2.0 UNIT MARKING: "EMCT AND 4915".
LEGIBILITY AND PERMANENCY PER MIL-STD-130.

3.0 QUALITY ASSURANCE:

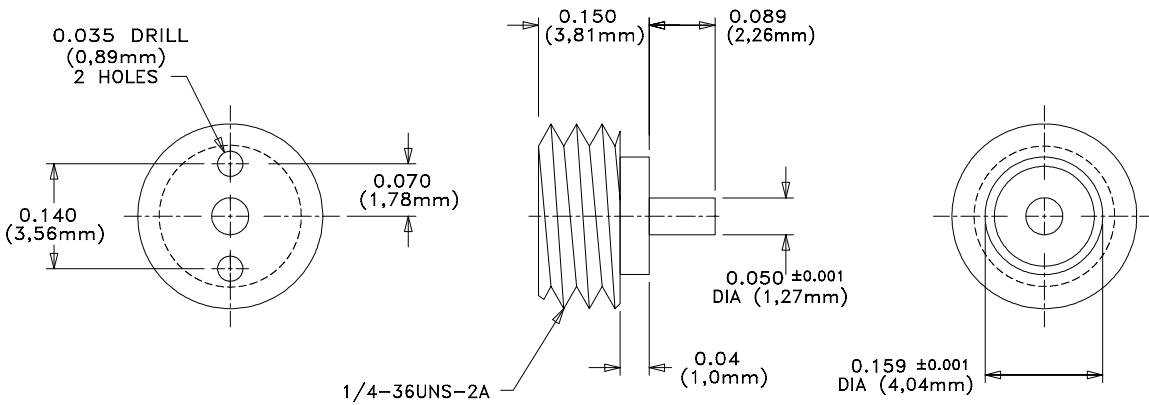
- 3.1 SAMPLE INSPECT PER ANSI/ASQC Z1.4 GENERAL INSPECTION, LEVEL II, AQL = 1.0.
 - 3.1.1 VISUAL AND MECHANICAL EXAMINATION FOR CONFORMANCE TO OUTLINE DWG REQUIREMENTS.
- 3.2 PERFORM INSPECTION IN ACCORDANCE WITH QA0006 AND FORM0357 FOR COMMERCIAL GRADE PRODUCT.
- 3.3 TEST DATA REQUIREMENTS:
 - 3.3.1 NO TEST DATA REQUIRED FOR CUSTOMER.
 - 3.3.2 DATA RETENTION – 24 MONTHS.

4.0 PACKAGING: STANDARD PACK PER MC0023.

ENG	PUR	MFG	PLAN	SM	
CC		QA			
EMC TECHNOLOGY, INC 1971 OLD CUTHBERT ROAD CHERRY HILL, NJ 08034	CAGE CODE # 24602			DWG #	1004065000
	CHANGE NOTICE	EN 01-266		REV LVL	C
				SHEET	1 OF 2

PART ID REF

4915

**MECHANICAL SPECIFICATIONS:****CASE:**

MATERIAL - STAINLESS STEEL, ASTM A582.
FINISH - PASSIVATE, QQ-P-35, TYPE IV.

PIN:

MATERIAL - BERYLLIUM COPPER, ASTM B197.
FINISH - GOLD, MIL-G-45204, TYPE II, CLASS 1.

DIELECTRIC:

MATERIAL - TEFLON, ASTM D1710.

CERAMIC:

MATERIAL - BERYLLIA, ASTM F-356.

METRIC EQUIVALENTS ARE GIVEN FOR
REFERENCE INFORMATION ONLY




EMC TECHNOLOGY INC
1971 OLD CUTHBERT RD
CHERRY HILL NJ 08034
PHONE NO. (856) 429-7800
FAX NO. (856) 429-1807

UNLESS OTHERWISE
SPECIFIED DIMENSIONS
ARE IN INCHES
TOLERANCES

FRACT ---
ANG ---
XX ±0.01
XXX ±0.005
XXXX ---

THESE DRAWINGS AND SPECIFICATIONS ARE THE PROPERTY OF EMC TECHNOLOGY INC AND SHALL NOT BE DUPLICATED OR USED AS BASIS FOR THE MANUFACTURE OR SALE OF PARTS OR DEVICES WITHOUT PERMISSION.

CAGE CODE	SCALE	DRAWN BY	CHECKED BY	APPROVED BY
24602	1:1	BEC 6/7/01		FJV 6/26/01
REV	CHANGE NOTICE	DRAWING NO	SHEET	
C	EN 01-266	1004065000	2 OF 2	