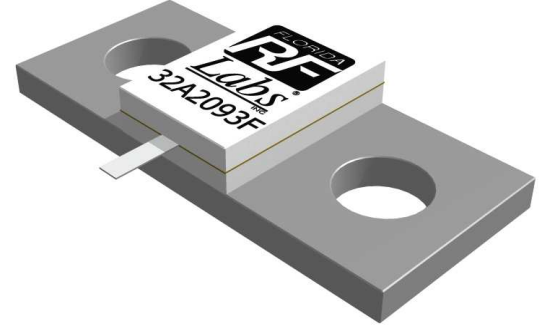


## FEATURES

- Tab Launch
- High Power
- Integrated Heat Sink
- Low VSWR

## APPLICATIONS

- Mobile Networks
- Broadcast
- High Power Amplifiers
- Instrumentation
- Isolators
- Military
- Satellite Communications



## GENERAL DESCRIPTION

Florida RF Labs offers the widest selection of flange mount terminations worldwide. High power flange mount components offer excellent performance and the convenience of bolt-in installation. The flanged mounted devices deliver power ratings up to 1000 watts and frequency ranges from DC to 18 GHz. The packages are available in single hole, double hole and four hole flange configurations.

## SPECIFICATIONS

### 1.0 ELECTRICAL

Nominal Impedance:	50 Ω
Frequency Range:	DC – 4.0 GHz
VSWR:	DC – 2.0 GHz 1.10:1 Max
	2.0 – 2.2 GHz 1.15:1 Max
	2.2 – 4.0 GHz 1.35:1 Max
Temperature Coefficient:	±200 PPM/°C Max
Power Rating:	150 Watts
Operating Temperature:	-55 °C To +150 °C
DC Resistance:	50 Ω ±5%

### 2.0 MECHANICAL

Flange:	Copper, Nickel Plated
Substrate:	Beryllium Oxide
Cover:	Alumina
Tab:	Beryllium Copper, Silver Plated
Resistive Element:	Thin Film

### 3.0 UNIT MARKING

Logo And Part Number

### 4.0 PACKAGING

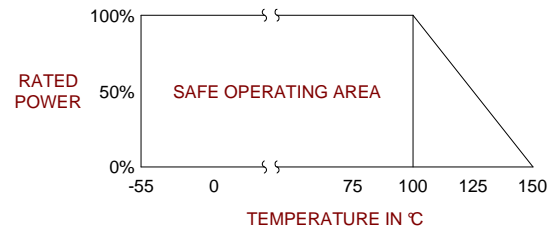
Standard: Tray Packaging

### 5.0 PART NUMBERING

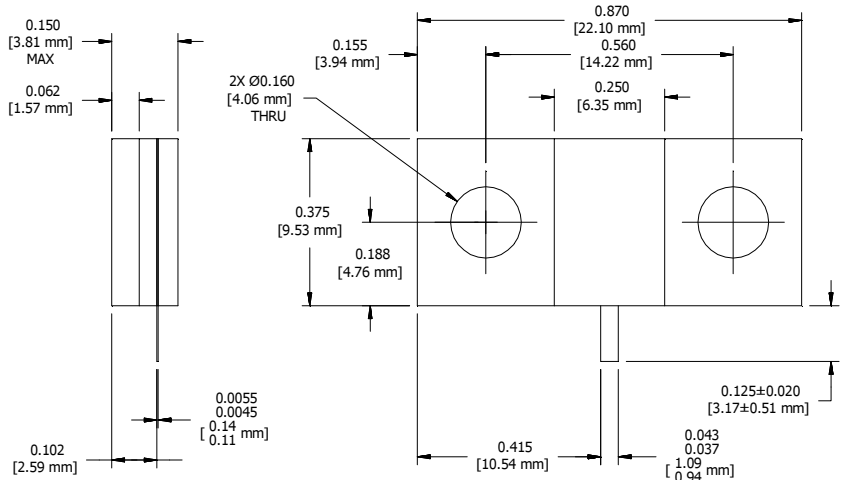
Part Identifier: 32A2093F

Note: Specifications are subject to change without notice

## POWER RATING AND DERATING



## MECHANICAL OUTLINE



Unless Otherwise Specified: TOLERANCE: .XXX = ± .010