

**TITLE: SPECIFICATION CONTROL DRAWING**

**PART IDENTIFIER:** 8640

**DESCRIPTION:** 50 OHM FLANGE LOAD

**ASSEMBLY DWG:** 2100854

**1.0 SPECIFICATIONS:**

**1.1 ELECTRICAL:**

- 1.1.1 IMPEDANCE: 50 OHMS NOMINAL.
- 1.1.2 FREQUENCY RANGE: DC-12.4 GHZ.
- 1.1.3 INPUT POWER (MAX @ 60°C):
  - 1.1.3.1 AVERAGE: 20 WATTS.
  - 1.1.3.2 PEAK: 100 WATTS (100 US PULSE WIDTH AND 0.1% DUTY CYCLE).
- 1.1.4 VSWR: DC TO 4.0 GHZ - 1.20 MAX.  
4.0 TO 8.0 GHZ - 1.25 MAX.  
8.0 TO 12.4 GHZ - 1.40 MAX.

**1.2 MECHANICAL:**

- 1.2.1 OUTLINE DWG: SEE SHEET 2.
- 1.2.2 WORKMANSHIP: PER MIL-STD-454, REQUIREMENT 9.

**1.3 ENVIRONMENTAL:**

- 1.3.1 TEMPERATURE RANGE:
  - 1.3.2.1 NON-OPERATING: -55°C TO +150°C.
  - 1.3.2.2 OPERATING: -55°C TO +125°C.
- 1.3.3 VIBRATION: PER MIL-STD-202, METHOD 201 AND MIL-D-39030.
- 1.3.4 SHOCK: PER MIL-STD-202, METHOD 213, COND. I.
- 1.3.5 MOISTURE: PER MIL-STD-202, METHOD 106 AND MIL-D-39030 EXCEPT LOADING VOLTAGE IS NOT APPLICABLE.

**2.0 UNIT MARKING:**

"EMCT"  
LEGIBILITY AND PERMANENCY PER MIL-STD-130.

**3.0 QUALITY ASSURANCE:**

- 3.1 SAMPLE INSPECT PER ANSI/ASQC Z1.4 GENERAL INSPECTION, LEVEL II, AQL = 1.0.
  - 3.1.1 VISUAL AND MECHANICAL EXAMINATION FOR CONFORMANCE TO CONTROL DRAWING REQUIREMENTS, INCLUDING SMA INTERFACE.
  - 3.1.2 MEASURE AND RECORD VSWR @ 1 TO 12.4 GHZ IN 1 GHZ INCREMENTS.
    - 3.1.2.1 ACCEPTANCE LIMITS: SEE ELECTRICAL 1.1.4..
- 3.2 TEST DATA REQUIREMENTS:
  - 3.2.1 NO TEST DATA REQUIRED FOR CUSTOMER.
  - 3.2.2 DATA RETENTION: STANDARD.

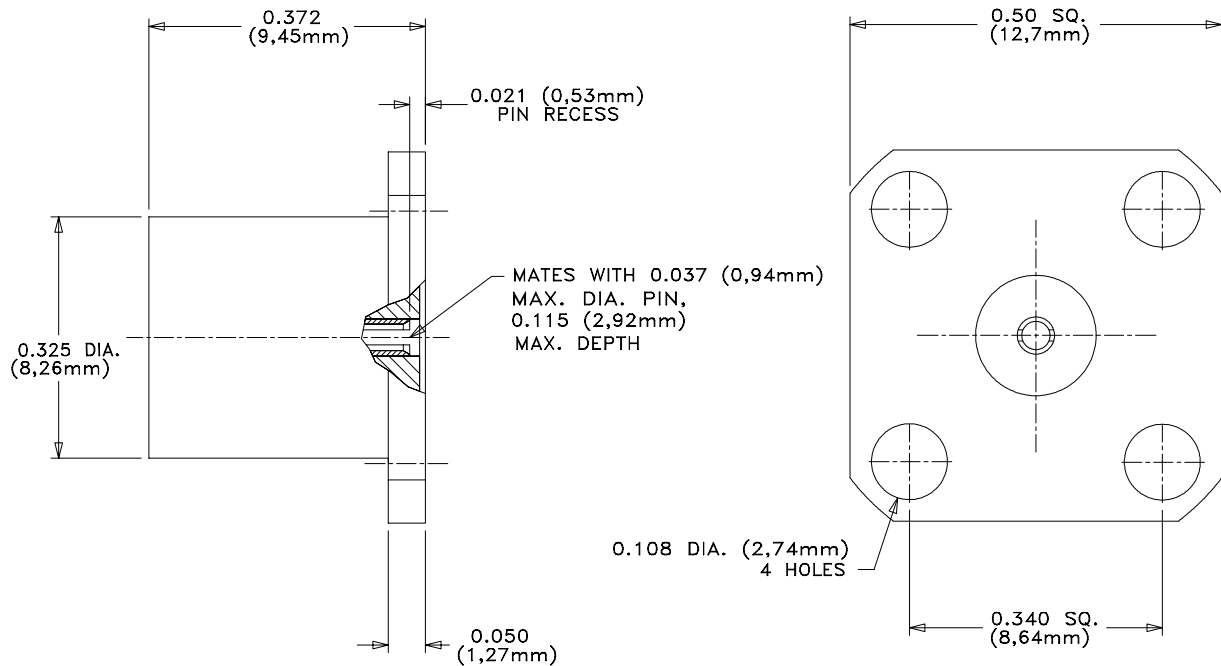
**4.0 PACKAGING:**

STANDARD PACK PER MC0023.

<b>ENG</b>	<b>PUR</b>	<b>MFG</b>	<b>PLAN</b>	<b>SM</b>
<b>CC</b>		<b>QA</b>		
<b>EMC TECHNOLOGY, INC 1971 OLD CUTHBERT ROAD CHERRY HILL, NJ 08034</b>	<b>CAGE CODE # 24602</b>			<b>DWG #</b> 1000795000
	<b>CHANGE NOTICE</b>	EN 00-471		<b>REV LVL</b> C
				<b>SHEET</b> 1 OF 2

PART ID REF

8640



**MECHANICAL SPECIFICATIONS:**

**CASE:**

MATERIAL - ALUMINUM, QQ-A-225/3.  
FINISH - CHROMATE, MIL-C-5541.

**PIN:**

MATERIAL - BERYLLIUM COPPER, ASTM B197.  
FINISH - GOLD, MIL-G-45204, TYPE II, CLASS 1.

**DIELECTRIC:**

MATERIAL - TEFLON, ASTM D1710.

**CERAMIC:**

MATERIAL - BERYLLIA, ASTM F-356.

METRIC EQUIVALENTS ARE GIVEN FOR  
REFERENCE INFORMATION ONLY



EMC TECHNOLOGY INC  
1971 OLD CUTHBERT RD  
CHERRY HILL NJ 08034  
PHONE NO. (856) 429-7800  
FAX NO. (856) 429-1807

UNLESS OTHERWISE SPECIFIED DIMENSIONS ARE IN INCHES TOLERANCES  
FRACT ---  
ANG ---  
XX ±0.01  
XXX ±0.005  
XXXX ---

THESE DRAWINGS AND SPECIFICATIONS ARE THE PROPERTY OF EMC TECHNOLOGY INC AND SHALL NOT BE DUPLICATED OR USED AS BASIS FOR THE MANUFACTURE OR SALE OF PARTS OR DEVICES WITHOUT PERMISSION.

CAGE CODE 24602	SCALE 1:1	DRAWN BY CME 11-10-00	CHECKED BY	APPROVED BY DAR 11-16-00
REV C	CHANGE NOTICE EN 00-471	DRAWING NO 1000795000	SHEET 2 OF 2	