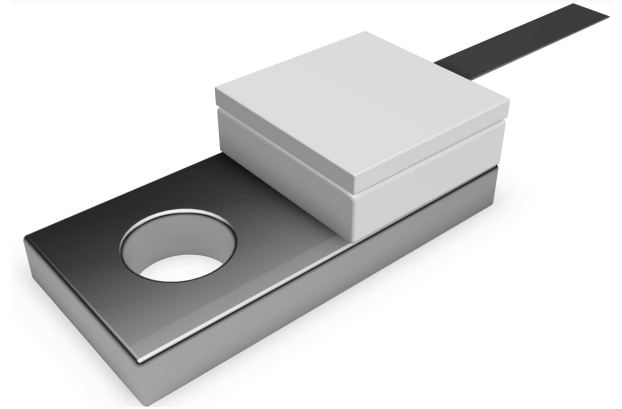


FEATURES

- Tab Launch
- High Power
- Integrated Heat Sink
- Low VSWR
- 100% Tested

APPLICATIONS

- Mobile Networks
- Broadcast
- High Power Amplifiers
- Instrumentation
- Isolators
- Military
- Satellite Communications



GENERAL DESCRIPTION

Florida RF Labs offers the widest selection of flange mount terminations worldwide. High power flange mount components offer excellent performance and the convenience of bolt-in installation. The flanged mounted devices deliver power ratings up to 1000 watts and frequency ranges from DC to 18 GHz. The packages are available in single hole, double hole and four hole flange configurations.

SPECIFICATIONS

1.0 ELECTRICAL

- Nominal Impedance: 50 Ω
- Frequency Range: DC – 3.0 GHz
- VSWR: 1.20 DC - 1.0 GHz Max
1.35 1.0 - 3.0 GHz Max
- Temperature Coefficient: ± 200 PPM/ $^{\circ}$ C Max
- Power Rating: 60 Watts
- Operating Temperature: -55 $^{\circ}$ C To +150 $^{\circ}$ C
- DC Resistance: 50 Ω $\pm 5\%$

2.0 MECHANICAL

- Flange: Copper, Nickel Plated
- Substrate: Beryllium Oxide
- Cover: Protective Coating
- Tab: Beryllium Copper, Silver Plated
- Resistive Element: Thin Film

3.0 UNIT MARKING

- Log and Part Number

4.0 PACKAGING

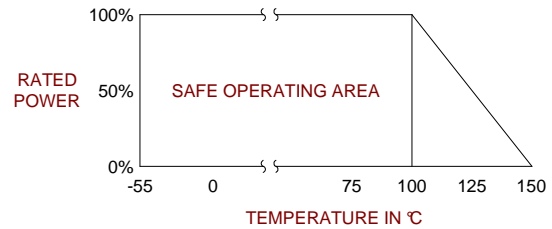
- Standard: Tray Packaging

5.0 PART NUMBERING

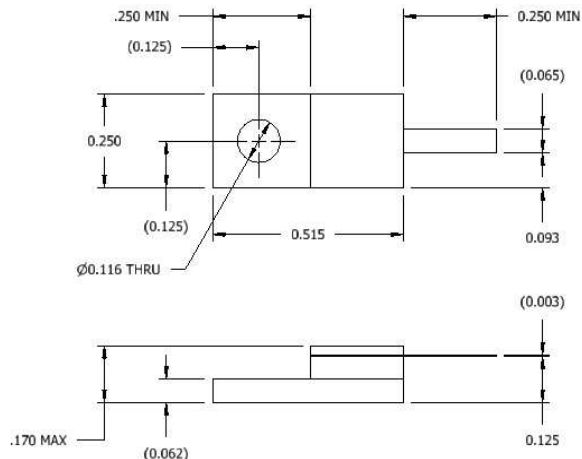
- Part Identifier: 32A1066F

Note: Specifications are subject to change without notice.

POWER RATING AND DERATING



MECHANICAL OUTLINE



Unless Otherwise Specified:

TOLERANCE: $\pm .010$