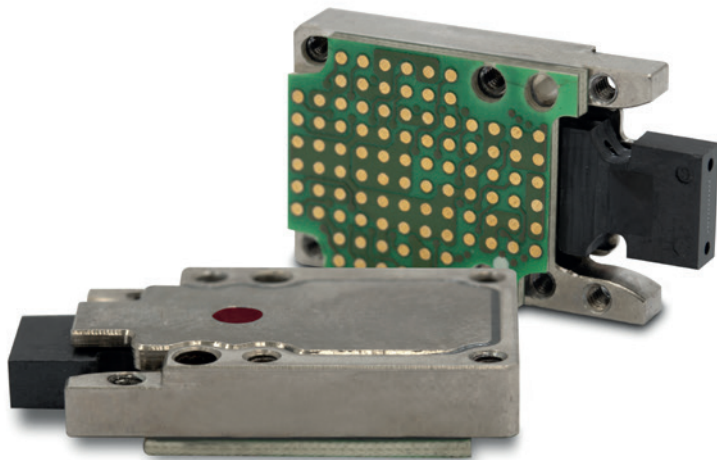


LightABLE 10G LGA 4TRX

Rugged optical transceiver



Product Summary

The *LightABLE™* LGA 4TRX optical module is a four-lane, full-duplex, 10 Gbps per lane, optical transceiver in a small, ruggedized package for harsh-environment applications.

The electrical interfaces are based on CML logic levels and support per lane data rates of up to 10.3125 Gbps (a total bandwidth of over 40 Gbps full-duplex).

The optical transceiver integrates an industry-standard, 1x12 MT, optical interface using the QSFP+-compatible channel configuration (4-TX/4-n.c./4-RX). The transceiver uses a 96-pin LGA-type electrical interposer connector and the entire plug-in module is screw-attached on to the host board.

The module contains a preprogrammed microcontroller for configuration – only power and high-speed signaling is required.

An I2C serial interface is provided to interrogate the module.

Rugged, low-SWaP,
multichannel optical
transceivers for
defense applications

Qualification

MIL-STD-883

- Vibration tests, Method 2007.3
- Mechanical shock tests, Method 2002.5
- Thermal shock tests, Method 1011.9
- Thermal cycling tests, Method 1010.8

JEDEC-STD-22

- Damp heat - Method A101

MIL-STD-810

- Cold storage tests, Method 502.5

Key Features

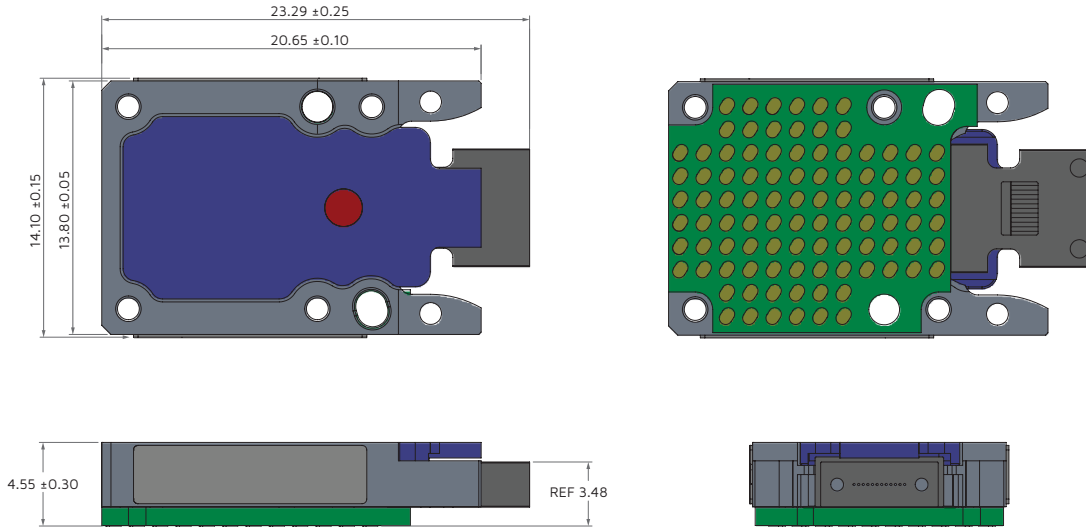
- Industrial temperature: -40 °C to 85 °C
- Sensitivity up to -12 dBm
- Up to 10.3125 Gbps per channel
- Short-reach 850 nm VCSELs
- Standard 1x12 MT optical interface
- 4 differential CML inputs
- 4 differential CML outputs
- LGA electrical interface
- Link distance up to 100 m (OM3 fiber)
- I2C communication interface
- Asynchronous channel operation
- Data protocol-agnostic, balanced code

Application

The *LightABLE* 4TRX LGA module targets the following applications:

- Phased array radars
- CCD/CMOS imaging sensors
- FPGA serdes

Mechanical layout



Part Numbering and Ordering Information

Part number	Description
Transceiver	
LLX04P9185323AA	LightABLE 10G 4TRX LGA transceiver, high sensitivity
LLX04P9185321AA	LightABLE 10G 4TRX LGA transceiver, standard sensitivity
Accessories	
415-00018	1 mm, 96-position, LGA interposer kit (interposer +4 x ¼ in. screws)
700-00106	1 mm, 96-position, LGA interposer (no screws)
322-00030	MicroClip
706-00003	Dowel pins
500-00002	1.2 m MT-to-MT multimode fiber cable
500-00007	1.8 m MT-to-MPO multimode fiber cable / MPO optical fiber ribbon cable
600-00037	MT dust cap (included with the LightABLE).
Evaluation boards and related parts	
LLK040028500001	LightABLE 10G 4TRX evaluation board
865-00003	I2C host adapter (AARDVARK)
500-00017	12-fiber multimode breakout cable with MT-to-FC/PC connectors
500-00020	Loopback ribbon fiber cable (MPO)
500-00250	1.8 m MT-to-MPO multimode fiber cable
600-00024	MPO-to-MPO adapter