

# TERMINATION FLANGE MOUNT 2.2 KILOWATT



DATA SHEET

PART SERIES: 32A7209F

SHEET 1 OF 3  
Dwg 1014635

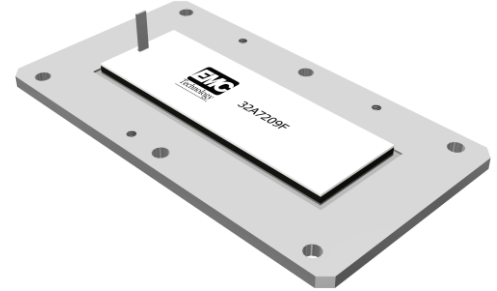
EN 15-0344  
Revision 1

## FEATURES

- High Power
- Direct Attached
- Low VSWR
- Easy Installation
- Excellent Heat Transfer

## APPLICATIONS

- Broadcast
- High Power Amplifiers
- Medical
- Military
- Instrumentation



## GENERAL DESCRIPTION

EMC Technology offers a wide selection of terminations in various package styles. Our specialty products for Magnetic Resonance Imaging (MRI) application feature excellent VSWR and very high power handling in a compact and thermally efficient package.

## ORDERING INFORMATION

Part Identifier: **32A7209F**

## SPECIFICATIONS

### 1.0 ELECTRICAL

Nominal Impedance:	50 ohms
Frequency Range:	64 ± 1.5 MHz; 128 ± 1.5 MHz; 298 ± 1.5 MHz
VSWR:	1.10:1 typical (with external matching network)
Input Power CW:	2.2 kilowatts
Pulse Power:	20 kilowatts (5 ms pulse width, 5% duty cycle)
DC Resistance:	50 ohms ± 5%

### 2.0 ENVIRONMENTAL

Operating Temperature:	-55°C to +75°C
Non-operating Temperature:	-65°C to +150°C
Temperature Coefficient:	± 200 PPM / °C max

### 3.0 MARKING

Unit Marking:	Logo, Part Number
---------------	-------------------

### 4.0 QUALITY ASSURANCE

Visual and Mechanical Inspection:	Per 824W107
DC Resistance Check:	100% DC Resistance Check
Data Retention:	Standard

### 5.0 PACKAGING

Standard Packaging:	Tray
---------------------	------

# TERMINATION FLANGE MOUNT 2.2 KILOWATT



DATA SHEET

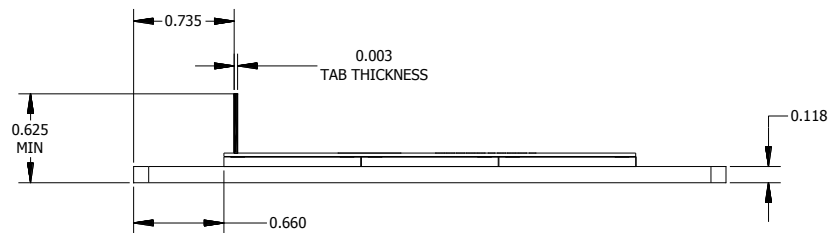
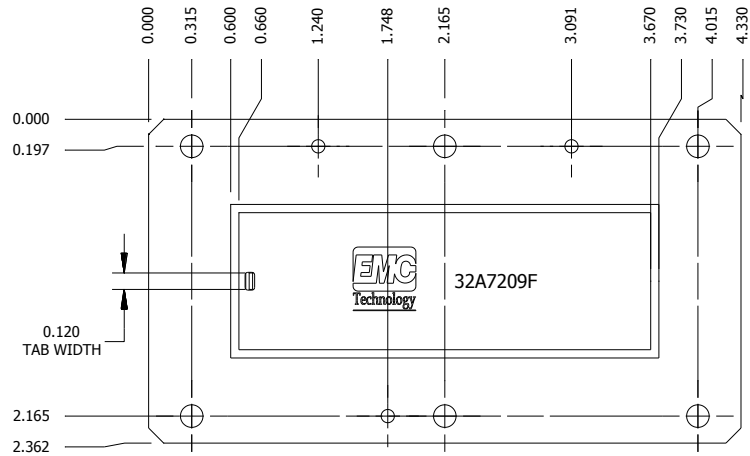
PART SERIES: 32A7209F

SHEET 2 OF 3  
Dwg 1014635

EN 15-0344  
Revision 1

## 6.0 MECHANICAL

Substrate Material:	Aluminum Nitride
Resistive Film:	Thin Film
Tab Material:	Copper
Tab Finish:	Silver Plated
Flange Material:	Copper
Flange Finish:	Nickel Plated



Unless Otherwise Specified: TOLERANCE: X.XX = ± 0.01 X.XXX = ± 0.005 ALL DIMENSIONS ARE IN INCHES

# TERMINATION FLANGE MOUNT 2.2 KILOWATT



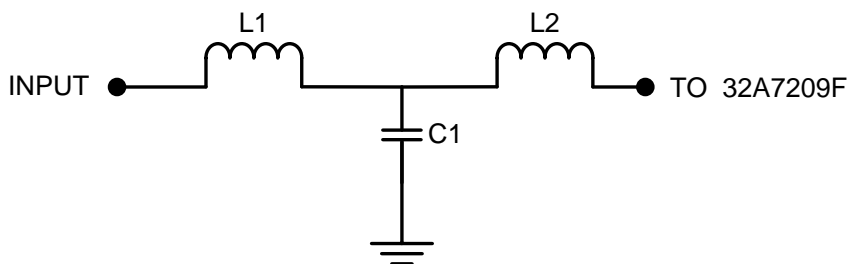
DATA SHEET

PART SERIES: 32A7209F

SHEET 3 OF 3  
Dwg 1014635

EN 15-0344  
Revision 1

## 7.0 Recommended External Matching Network:



Optimized Frequency	L1	L2	C1
64 MHz	8.3 nH	72.7 nH	22.0 pF
128 MHz	9.2 nH	48.6 nH	22.0 pF
298 MHz	6.2 nH	22.5 nH	15.0 pF
400 MHz	5.0 nH	14.2 nH	13.0 pF

\* Recommended capacitor for C1: ATC 800 C Series