

TITLE: SPECIFICATION CONTROL DRAWING

PART IDENTIFIER: 5315

DESCRIPTION: 50 OHM FLANGE LOAD

ASSEMBLY DWG: 1700244

1.0 SPECIFICATIONS:

1.1 ELECTRICAL:

- 1.1.1 IMPEDANCE: 50 OHMS NOMINAL.
- 1.1.2 FREQUENCY RANGE: DC-18 GHZ.
- 1.1.3 INPUT POWER (@ 100°C HEAT SINK, DERATED LINEARLY FROM RATED POWER TO 0 WATTS @ 150°C):
 - 1.1.3.1 AVERAGE: 15 WATTS.
 - 1.1.3.2 PEAK: 150 WATTS (BASED ON 100 US PULSE WIDTH 1% DUTY CYCLE).
- 1.1.4 VSWR: DC TO 4.0 GHZ - 1.10 MAX.
4.0 TO 8.0 GHZ - 1.15 MAX.
8.0 TO 12.0 GHZ - 1.25 MAX.
12.0 TO 18.0 GHZ - 1.40 MAX.

1.2 MECHANICAL:

- 1.2.1 OUTLINE DWG: SEE SHEET 2.
- 1.2.2 WORKMANSHIP: PER MIL-STD-454, REQUIREMENT 9.

1.3 ENVIRONMENTAL:

- 1.3.1 TEMPERATURE RANGE:
 - 1.3.2.1 NON-OPERATING: -55°C TO +150°C.
 - 1.3.2.2 OPERATING: -55°C TO +125°C.
- 1.3.3 VIBRATION: PER MIL-STD-202, METHOD 201 AND MIL-D-39030.
- 1.3.4 SHOCK: PER MIL-STD-202, METHOD 213, COND. I.
- 1.3.5 MOISTURE: PER MIL-STD-202, METHOD 106 AND MIL-D-39030 EXCEPT LOADING VOLTAGE IS NOT APPLICABLE.

2.0 UNIT MARKING: "EMCT" AND PART IDENTIFIER.
LEGIBILITY AND PERMANENCY PER MIL-STD-130.

3.0 QUALITY ASSURANCE:

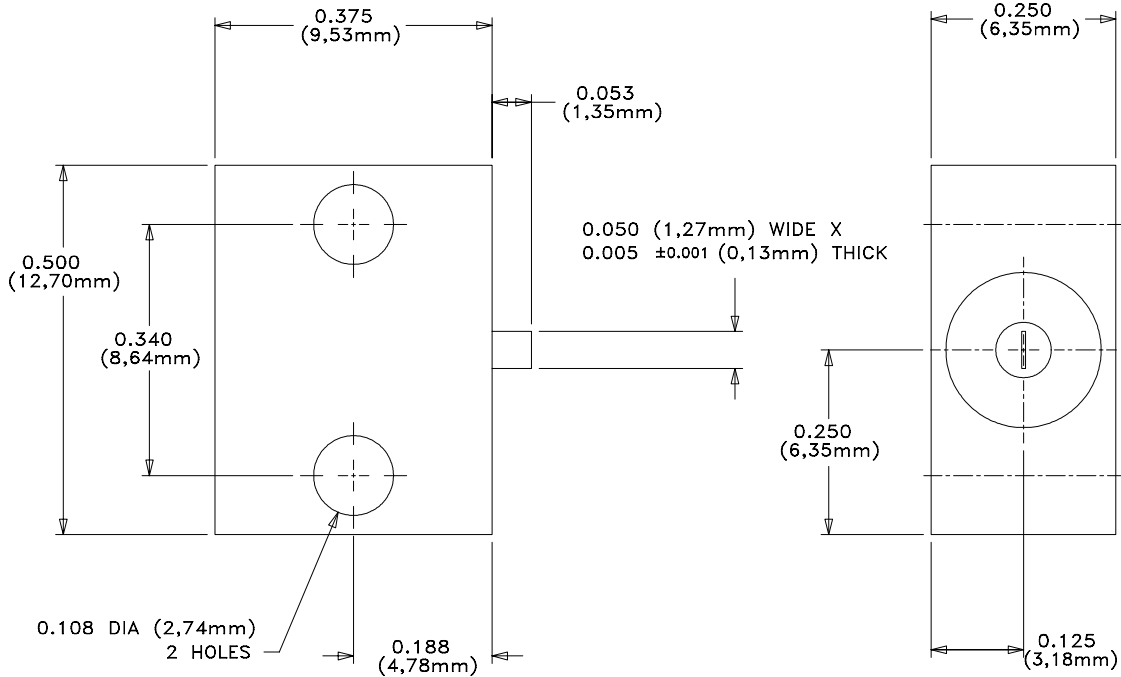
- 3.1 SAMPLE INSPECT PER ANSI/ASQC Z1.4 GENERAL INSPECTION, LEVEL II, AQL = 1.0.
 - 3.1.1 VISUAL AND MECHANICAL EXAMINATION FOR CONFORMANCE TO CONTROL DRAWING REQUIREMENTS, INCLUDING SMA INTERFACE.
 - 3.1.2 MEASURE AND RECORD VSWR @ 1 TO 18 GHZ IN 1 GHZ INCREMENTS.
 - 3.1.2.1 ACCEPTANCE LIMITS: SEE ELECTRICAL 1.1.4. .
- 3.2 TEST DATA REQUIREMENTS:
 - 3.2.1 NO TEST DATA REQUIRED FOR CUSTOMER.
 - 3.2.2 DATA RETENTION - 12 MONTHS

4.0 PACKAGING: STANDARD PACK PER MC0023.

ENG	PUR	MFG	PLAN	SM
CC		QA		
EMC TECHNOLOGY, INC 1971 OLD CUTHBERT ROAD CHERRY HILL, NJ 08034	CAGE CODE # 24602			DWG # 1008275000
	CHANGE NOTICE	EN 00-471		REV LVL C
				SHEET 1 OF 2

PART ID REF

5315

**MECHANICAL SPECIFICATIONS:****CASE:**

MATERIAL - ALUMINUM, QQ-A-225.
FINISH - CHROMATE, MIL-C-5541.

PIN:

MATERIAL - BERYLLIUM COPPER, ASTM B197.
FINISH - GOLD, MIL-G-45204, TYPE II, CLASS 1.

DIELECTRIC:

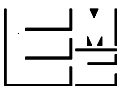
MATERIAL - TEFLON, ASTM D1710.

CERAMIC:

MATERIAL - BERYLLIA, ASTM F-356.



METRIC EQUIVALENTS ARE GIVEN FOR
REFERENCE INFORMATION ONLY


EMC TECHNOLOGY INC
1971 OLD CUTHBERT RD
CHERRY HILL NJ 08034
PHONE NO. (856) 429-7800
FAX NO. (856) 429-1807

UNLESS OTHERWISE
SPECIFIED DIMENSIONS
ARE IN INCHES
TOLERANCES
FRACT ---
ANG ---
XX ---
XXX ±0.005
XXXX ---

THESE DRAWINGS AND SPECIFICATIONS ARE THE PROPERTY OF EMC TECHNOLOGY INC AND SHALL NOT BE DUPLICATED
OR USED AS BASIS FOR THE MANUFACTURE OR SALE OF PARTS OR DEVICES WITHOUT PERMISSION.

CAGE CODE	SCALE	DRAWN BY	CHECKED BY	APPROVED BY
24602	1:1	CME 11-14-00		DAR 11-16-00
REV	CHANGE NOTICE	DRAWING NO	SHEET	
C	EN 00-471	1008275000	2 OF 2	