

TERMINATION TAB & EPOXY 600 WATT



DATA SHEET

PART SERIES: 82A7195TEF

SHEET 1 OF 2
Dwg 1015625

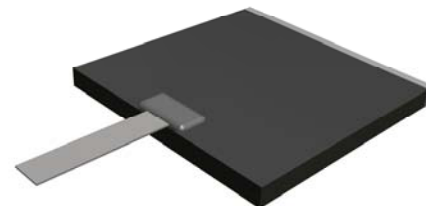
EN 16-0483
Revision -

FEATURES

- Wide Band Response
- High Power
- Direct Attached
- Low VSWR
- Easy installation
- Excellent Heat Transfer

APPLICATIONS

- Mobile Networks
- Broadcast
- High Power Amplifiers
- Isolators
- Military
- Instrumentation



GENERAL DESCRIPTION

EMC Technology offers the widest selection of flangeless terminations worldwide. Tab and Epoxy components offer the highest performance of any style of termination component.

ORDERING INFORMATION

Part Identifier: 82A7195TEF

SPECIFICATIONS

1.0 ELECTRICAL

Nominal Impedance:	50 ohms
Frequency Range:	2.4 – 2.5 GHz
VSWR:	1.17:1 MAX
Input Power CW:	600 Watts @ 100°C heat sink, derated linearly to zero power and 150°C
Peak Power:	6 Kilowatts (based on 10µs pulse width and 1% duty cycle)
DC Resistance:	50 Ω 5%

2.0 ENVIRONMENTAL

Operating Temperature:	-55°C to +150°C
Non-operating Temperature:	-65°C to +150°C
Temperature Coefficient:	+/-200 PPM / °C max

3.0 MARKING

Unit Marking:	N/A
---------------	-----

4.0 QUALITY ASSURANCE

Visual and Mechanical Inspection:	Per 824W107
DC Resistance Check:	100% DC Resistance Check
Data Retention:	Standard

5.0 PACKAGING

Standard Packaging:	Tray Packaging
---------------------	----------------

TERMINATION TAB & EPOXY 600 WATT



DATA SHEET

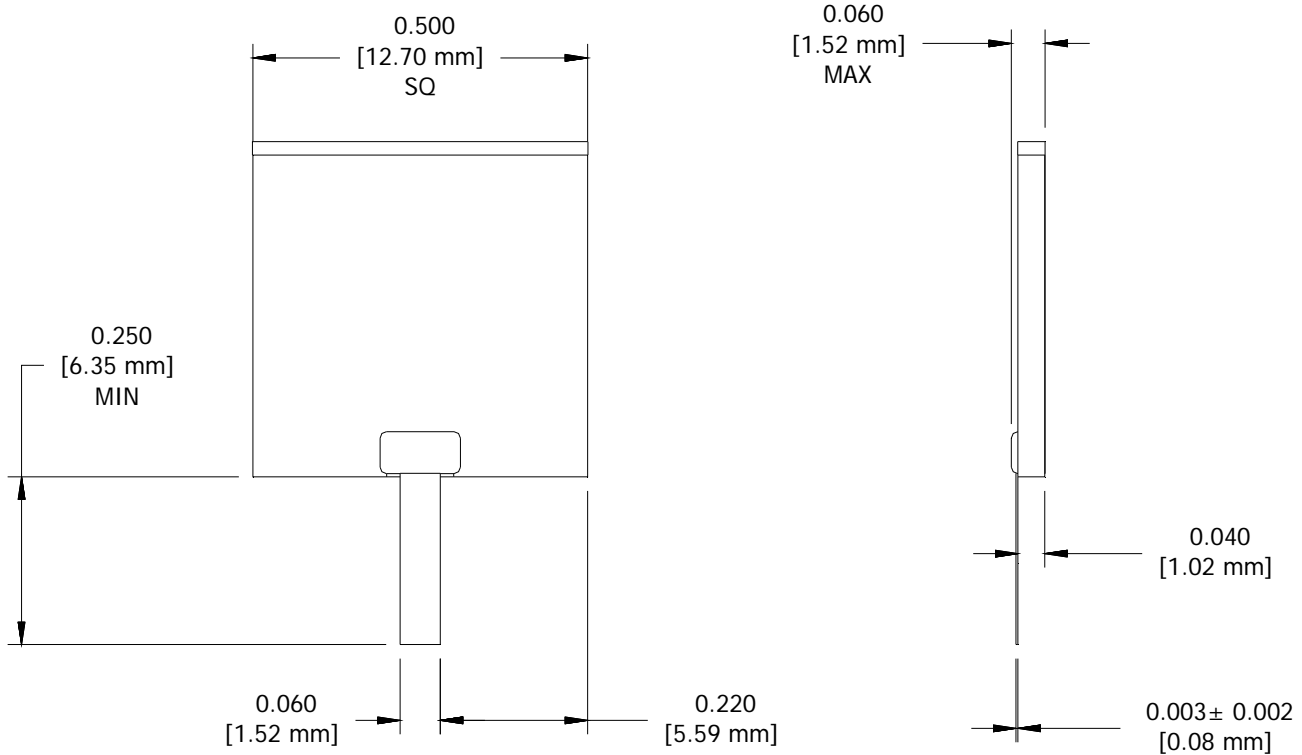
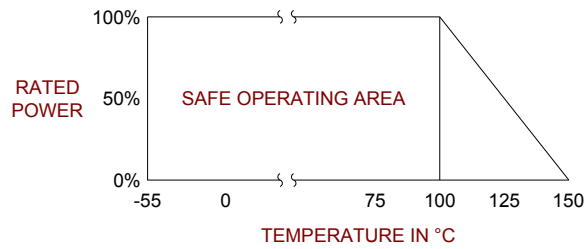
PART SERIES: 82A7195TEF

SHEET 2 OF 2
Dwg 1015625

EN 16-0483
Revision -

6.0 MECHANICAL

Substrate Material:	Aluminum Nitride
Resistive Film:	Thin Film
Tab Material:	Beryllium Copper
Tab Finish:	Silver
Metric Dimensions:	Provided for reference only



Unless Otherwise Specified: TOLERANCE: X.XX = ± 0.01 X.XXX = ± 0.005