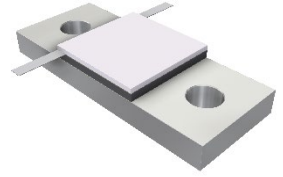


ORDERING INFORMATION

PART IDENTIFIER:

33-1042-30.00

Attenuation Value



SPECIFICATIONS

1. ELECTRICAL:

Nominal Impedance:	50 ohms
Frequency Range:	DC – 1.0 GHz
Attenuation Values Available:	30 dB
Attenuation Accuracy:	± 1.0 dB
Input Power CW:	250 watts @ 100°C heat sink, derated linearly to zero power at 150°C
Peak Power:	2500 watts (based on 10us pulse width and 1% duty cycle)
VSWR:	1.25:1 Max

2. ENVIRONMENTAL:

Operating Temperature:	-55°C to +150°C
Non-operating Temperature:	-65°C to +150°C
Temperature Coefficient:	+/-200 PPM / °C max

3. MARKING:

Unit Marking:	In/Out, Logo, and Attenuation value, legibility, and permanency per MIL-STD-130
---------------	---

4. QUALITY ASSURANCE:

Sample Inspect Per MIL-STD-105, Level II, 1.0% AQL.

Visual and Mechanical Examination for Conformance to Outline Drawing Requirements.

Measure Attenuation and VSWR.

Data Retention – Standard

5. PACKAGING:

Standard Packaging:	Tray
---------------------	------

6. MECHANICAL:

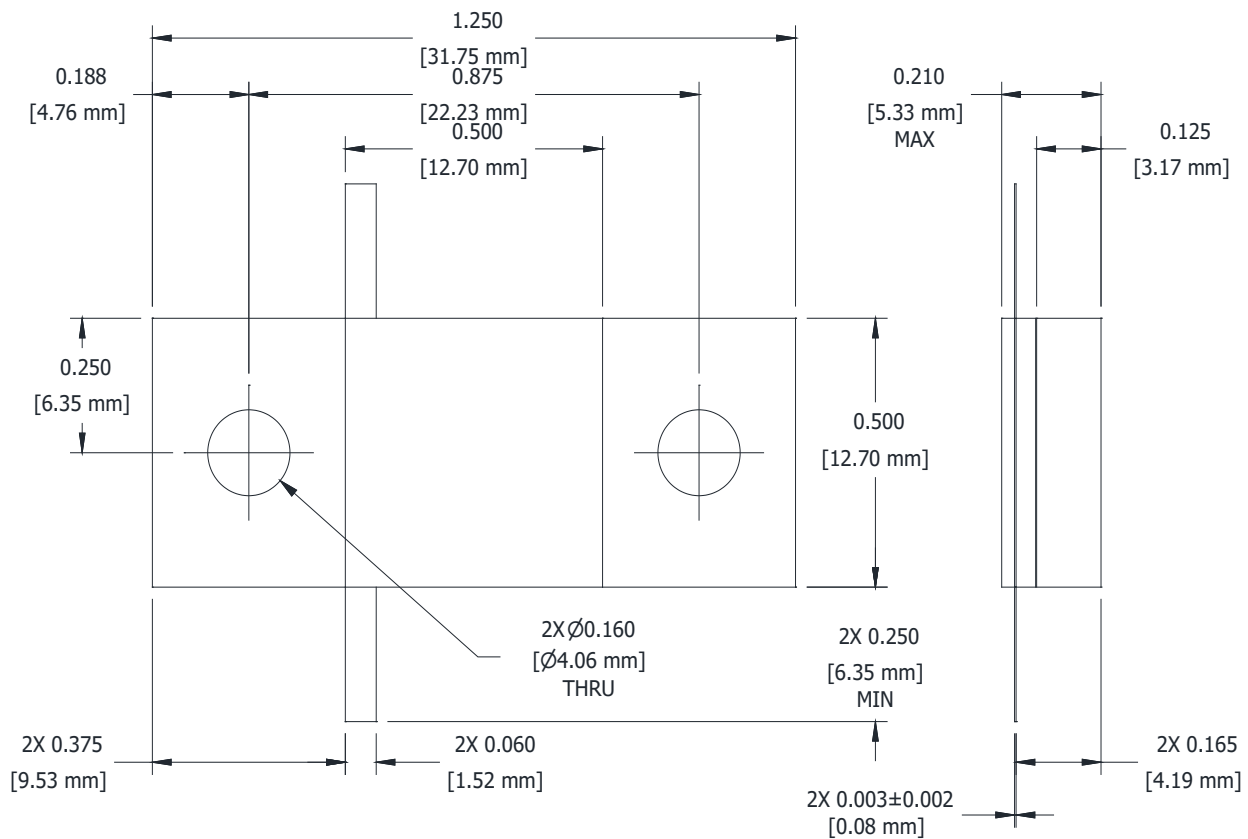
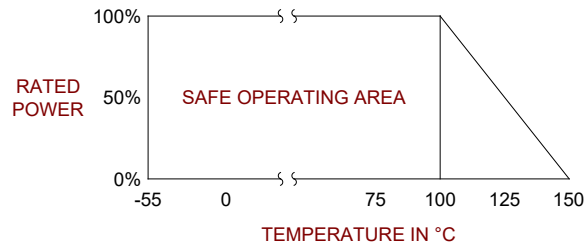
Substrate Material:	Beryllium Oxide
Resistive Film:	Thin Film
Cover Material:	Alumina Oxide
Tab Material:	Beryllium Copper
Tab Finish:	Tin/Lead

ATTENUATOR FLANGE MOUNT 250 WATT

DATASHEET PART SERIES: 33-1042-30.00

Sheet 2 of 2
Doc# 33-1042-30.00ECO-083524
Revision -

Flange Material: Copper
 Flange Finish: Nickel
 Metric Dimensions: Provided for reference only.



Unless Otherwise Specified: TOLERANCE: X.XX = ± 0.02 X.XXX = ± 0.010