

# RESISTOR

## CHIP OUTRIGGER 9.5 WATTS



DATA SHEET

PART SERIES: CRHA1211XXXXF

SHEET 1 OF 3  
Dwg 1016135

EN 20-0100  
Revision A

### FEATURES

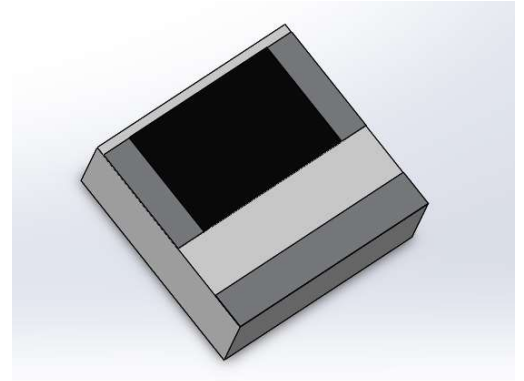
- Wide Band Operation
- High Power
- Coplanar Waveguide Compatible
- Low Capacitance
- Easy Installation
- Wide Resistance Range

### APPLICATIONS

- Broadcast
- High Power Filters
- High Power Amplifiers
- Isolators
- Military
- Instrumentation

### GENERAL DESCRIPTION

EMC Technology offers the widest selection of chip resistors worldwide. Chip components are offered in both thick and thin film resistive material and available in Alumina, Aluminium Nitride, Beryllium Oxide and CVD Diamond. CRH series feature EMC Technology's patented outrigger resistor technology (US 8, 994, 490) to offer substantially improved power handling over conventional resistors without compromising broadband performance.



### ORDERING INFORMATION

Part Identifier: **CRHA1211XXXXF**

X = Tolerance (%)

XXX = Resistance Value ( $\Omega$ )

### SPECIFICATIONS

#### 1.0 ELECTRICAL

Frequency Range:	DC – 20GHz
Resistance Range:	10 - 500 $\Omega$
Resistance Tolerance:	$\pm 2\%$ or $\pm 5\%$
Temperature Coefficient of Resistance:	$\pm 200$ PPM/ $^{\circ}\text{C}$ Max
Input Power CW:	9.5Watts
Peak Power:	95 Watts, 10 $\mu\text{s}$ pulse width, 1% duty cycle

#### 2.0 ENVIRONMENTAL

Operating Temperature:	-55 $^{\circ}\text{C}$ to +150 $^{\circ}\text{C}$
Non-operating Temperature:	-65 $^{\circ}\text{C}$ to +150 $^{\circ}\text{C}$

#### 3.0 MARKING

Unit Marking:	None
---------------	------

#### 4.0 QUALITY ASSURANCE

Visual and Mechanical Inspection:	Per 824W107
DC Resistance Check:	100% DC Resistance Check
Data Retention:	Standard

#### 5.0 PACKAGING

Standard Packaging:	Tape and Reel
---------------------	---------------

# RESISTOR

## CHIP OUTRIGGER 9.5 WATTS



DATA SHEET

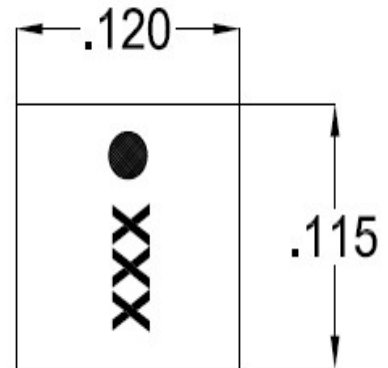
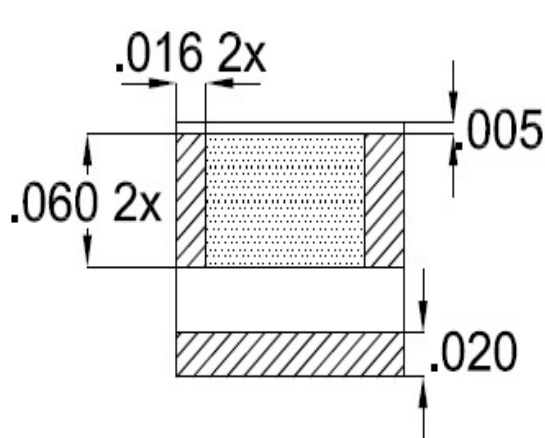
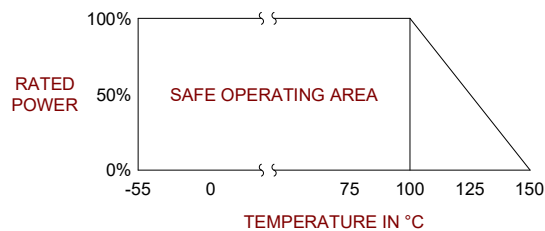
PART SERIES: CRHA1211XXXXF

SHEET 2 OF 3  
Dwg 1016135

EN 20-0100  
Revision A

### 6.0 MECHANICAL

Substrate Material:	AlN
Resistive Film:	Thick Film
Terminal Material:	Thick Film, Silver/Nickel Plating
Metric Dimensions:	Provided for reference only



Note: Specifications are subject to change.

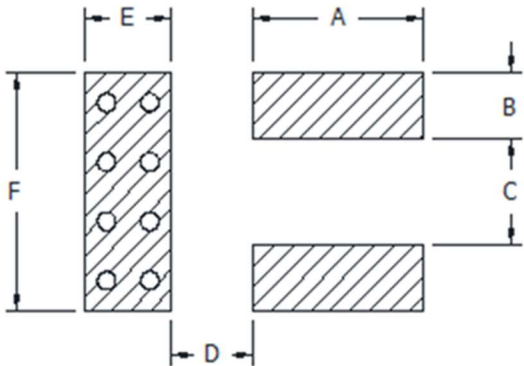
Unless Otherwise Specified: TOLERANCE: X.XX =  $\pm 0.01$  X.XXX =  $\pm 0.002$

# RESISTOR

## CHIP OUTRIGGER 9.5 WATTS



### 7.0 SUGGESTED MOUNTING FOOTPRINT



Part Number	Inches						mm					
	A	B	C	D	E	F	A	B	C	D	E	F
CRHA1211XXX5F	0.065	0.016	0.088	0.039	0.025	0.125	1.651	0.41	2.24	0.99	0.64	3.18