



## RESISTOR CHIP OUTRIGGER 2.5W

DATASHEET PART SERIES: CRH0811XXXXF

Sheet 1 of 2

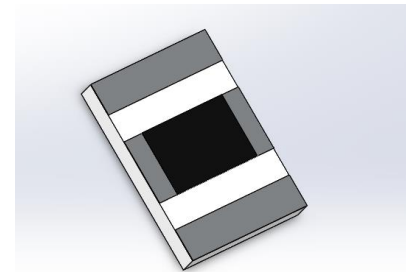
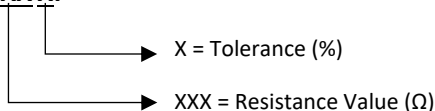
ECO-085210

Doc# CRH0811XXXXF-1016125

Revision A

## ORDERING INFORMATION

Part Identifier: CRH0811XXXXF



## SPECIFICATIONS

## 1.0 ELECTRICAL

Frequency Range:	DC – 25 GHz.
Resistance Range:	10 - 500 Ω.
Resistance Tolerance:	± 5%.
Temperature Coefficient of Resistance:	± 200 PPM/ °C Max.
Input Power CW:	2.5 Watt.
Peak Power:	25W, 10μs pulse width, 1% duty cycle.

## 2.0 ENVIRONMENTAL

Operating Temperature:	-55°C to +150°C.
Non-operating Temperature:	-65°C to +150°C.

## 3.0 MARKING

Unit Marking:	Dot Marking, OHMS Value.
---------------	--------------------------

## 4.0 QUALITY ASSURANCE

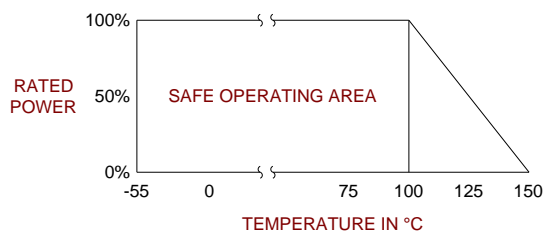
Visual and Mechanical Inspection:	Per 824W107.
DC Resistance Check:	100% DC Resistance Check.
Data Retention:	Standard.

## 5.0 PACKAGING

Standard Packaging:	Tape and Reel.
---------------------	----------------

## 6.0 MECHANICAL

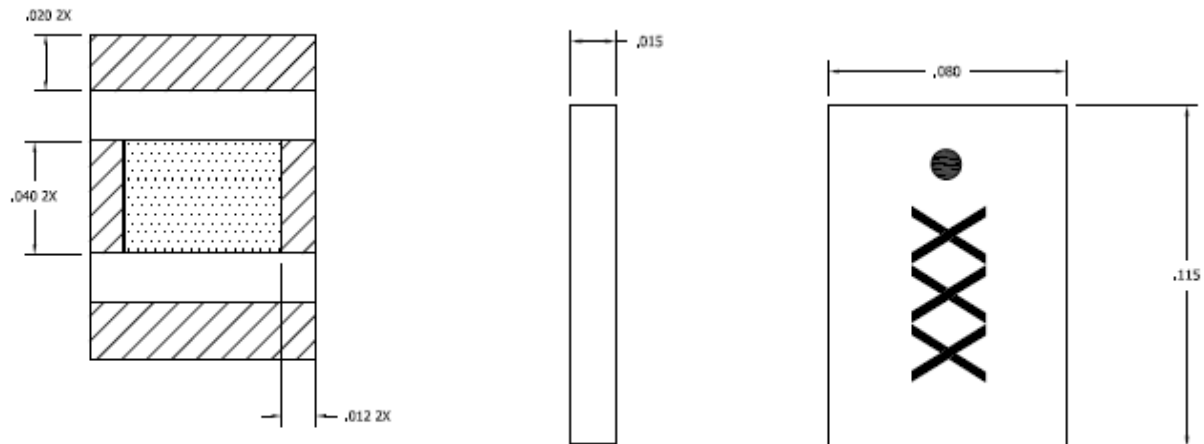
Substrate Material:	Alumina, 96%.
Resistive Film:	Thick Film.
Terminal Material:	Thick Film, Silver/Nickel Plated.
Metric Dimensions:	Provided for reference only.





## RESISTOR CHIP OUTRIGGER 2.5W

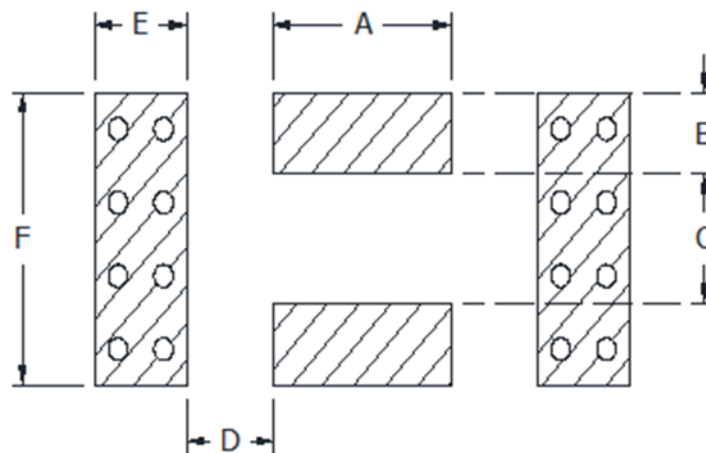
DATASHEET PART SERIES: CRH0811XXXXF

Sheet 2 of 2  
Doc# CRH0811XXXXF-1016125ECO-085210  
Revision A

Note: Specifications are subject to change.

Unless Otherwise Specified: TOLERANCE: X.XX =  $\pm 0.01$  X.XXX =  $\pm 0.002$ .

## 7.0 SUGGESTED MOUNTING FOOTPRINT



Part Number	Inches						mm					
	A	B	C	D	E	F	A	B	C	D	E	F
CRH0811XXX5F	0.045	0.014	0.056	0.018	0.025	0.085	1.143	0.36	1.42	0.44	0.64	2.16