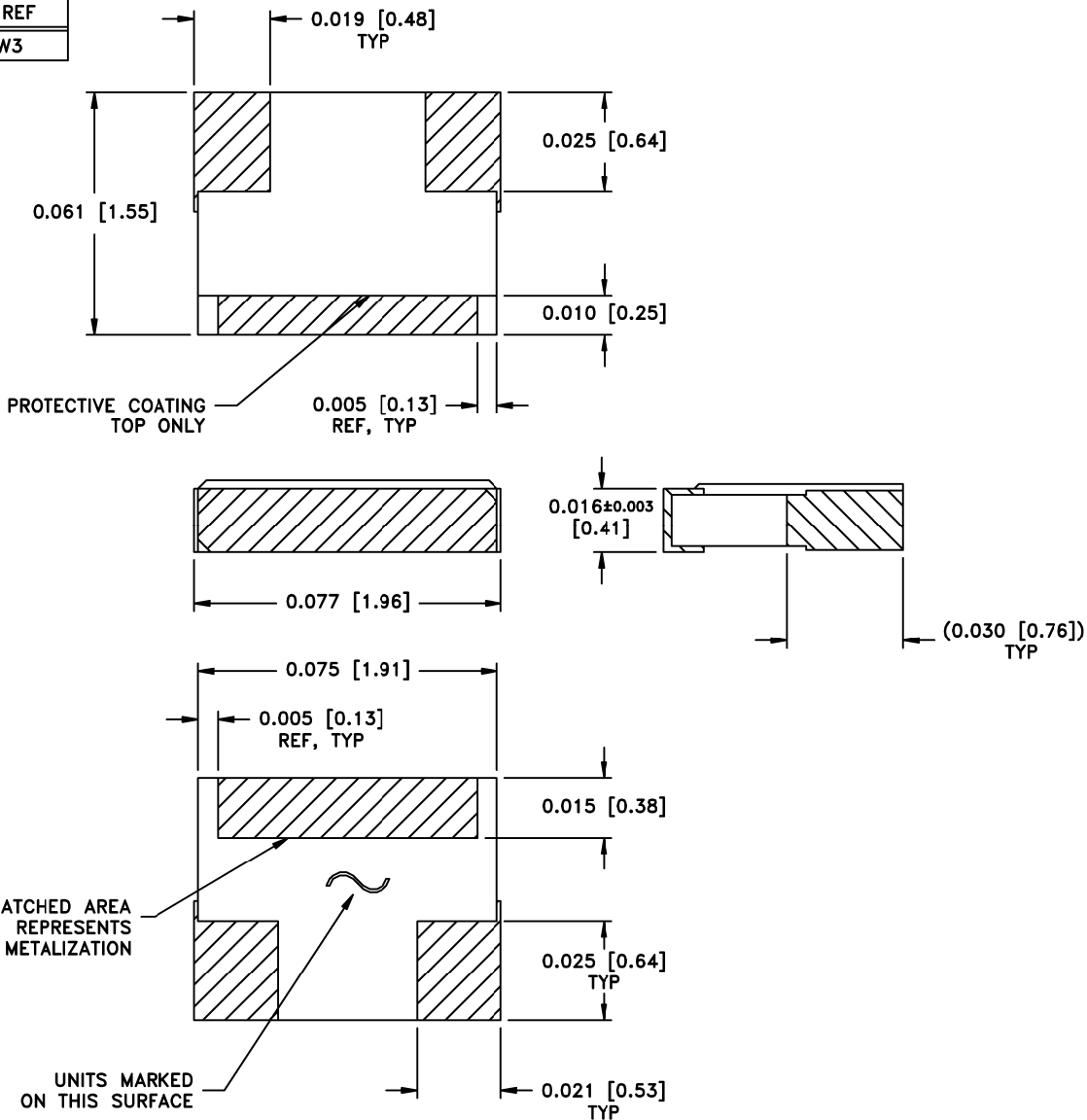


PART ID REF

HR05XXXW3

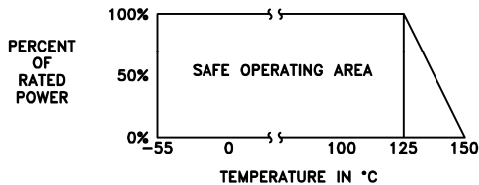


MECHANICAL SPECIFICATIONS:

- SUBSTRATE:
 - MATERIAL - ALUMINA 96%, MIL-I-10.
- TERMINAL:
 - MATERIAL - THICK FILM, NICKEL BARRIER, SOLDER PLATED.
- RESISTIVE ELEMENT:
 - MATERIAL - THIN FILM, TANTALUM NITRIDE.

METRIC EQUIVALENTS GIVEN IN [mm]
FOR REFERENCE INFORMATION ONLY

POWER RATING AND DERATING



8851 SW OLD KANSAS AVE
STUART, FL 34997
PHONE NO. (772)286-9300
FAX NO. (772)283-5286

UNLESS OTHERWISE SPECIFIED DIMENSIONS ARE IN INCHES

TOLERANCES

FRACT	---
ANG	---
XX	---
XXX	±0.005
XXXX	---

THESE DRAWINGS AND SPECIFICATIONS ARE THE PROPERTY OF EMC TECHNOLOGY INC AND SHALL NOT BE DUPLICATED OR USED AS BASIS FOR THE MANUFACTURE OR SALE OF PARTS OR DEVICES WITHOUT PERMISSION.

CAGE CODE	SCALE	DRAWN BY	CHECKED BY	APPROVED BY
24602	32:1	JG 9/28/09		
REV	CHANGE NOTICE	DRAWING NO	SHEET	
C	EN 09-E1001	1009995000	2 OF 2	